



Urbanism projects.....

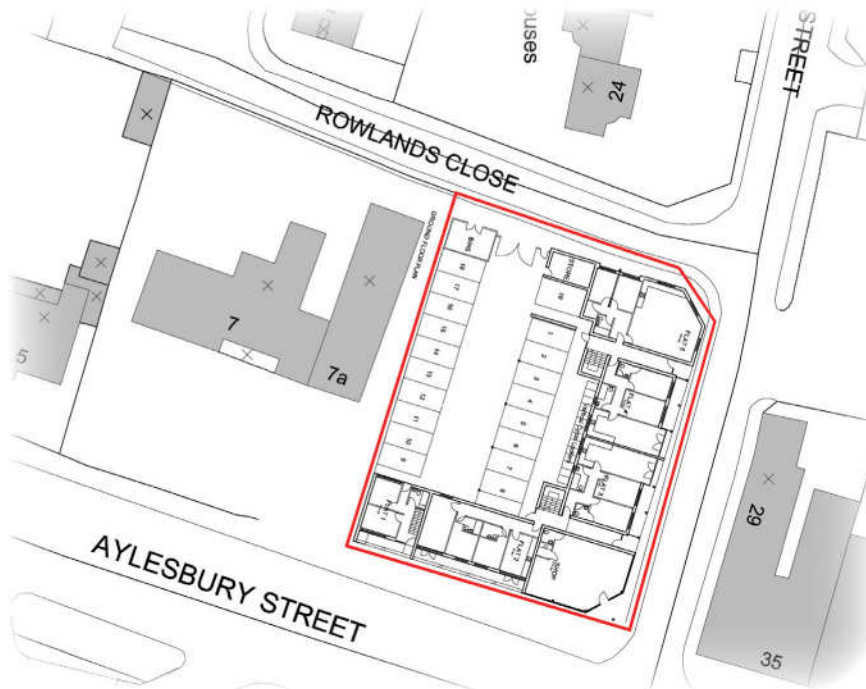
Page

Fenny Stratford - Aylesbury Street.....	02
98 High Street - Newport Pagnell.....	03
Bedford Broadway.....	04
Merton Rise - Basingstoke.....	05
Burnt Oak Broadway - Edgware.....	06
Jordan's Yard - Sandy.....	07
Bracknell - South City Sites.....	08



Hinton Cook Architects 2009

Fenny Stratford - Aylesbury Street



Client: Private

A scheme for the development of a disused site in Fenny Stratford. The scheme comprised seventeen flats and a commercial unit fronting the main street.

Careful siting and analysis of the local character informed its relationship with the street and context.

The built form wraps around the site perimeter and encloses a parking courtyard and garden terrace behind.

Particular attention was given to the corners where chamfered facade treatments were employed to soften the edges.

Recessed balconies on upper floors helped to animate the facades whilst deep overhangs provided solar shading and relief on the elevations.



98 High Street - Newport Pagnell



Client: GFXH Properties Ltd

The design proposals for 98 High Street draw upon the local building morphology and townscape yet synthesises this with a more contemporary aesthetic.

By adopting a domestic scale of construction that relates to adjacent buildings coupled with a resonance with the local urban grain, it can be demonstrated that the requirements of modern development can be integrated into a historic setting.

The houses are planned to maximise on the site levels and aspect. Careful attention to orientation minimises overlooking of neighbouring properties coupled with a grading of storey heights from single storey at the boundary to Bury Close up to three storeys within the main body of the site, adjacent to the original Villa.

A mixed palette of materials and colours reflects the vibrancy of Newport Pagnell and ensure variety within the proposal.



Merton Rise - Basingstoke

Client: Hampshire Council

This competition was for the master planning for two phases of a major development on the outskirts of Basingstoke.

The design was based around the construction of numerous landscaped focal points, to connect the newly created communities and provide areas of social interaction.

A variety of house typologies were produced including split level housing to handle the level changes on site.



Burnt Oak Broadway - Edgware

Client: Edgware Developments Ltd



Hinton Cook were appointed to design the external appearance, design and landscape of a 175 unit scheme in Edgware subsequent to an outline planning approval.

The scheme comprises 1,2 and 3 bedroom apartments, townhouses and maisonettes of varied massing and heights.



Jordan's Yard - Sandy

Client: McCann Homes

Jordans Yard is a focal point of Sandy and announces the entrance to the town centre.

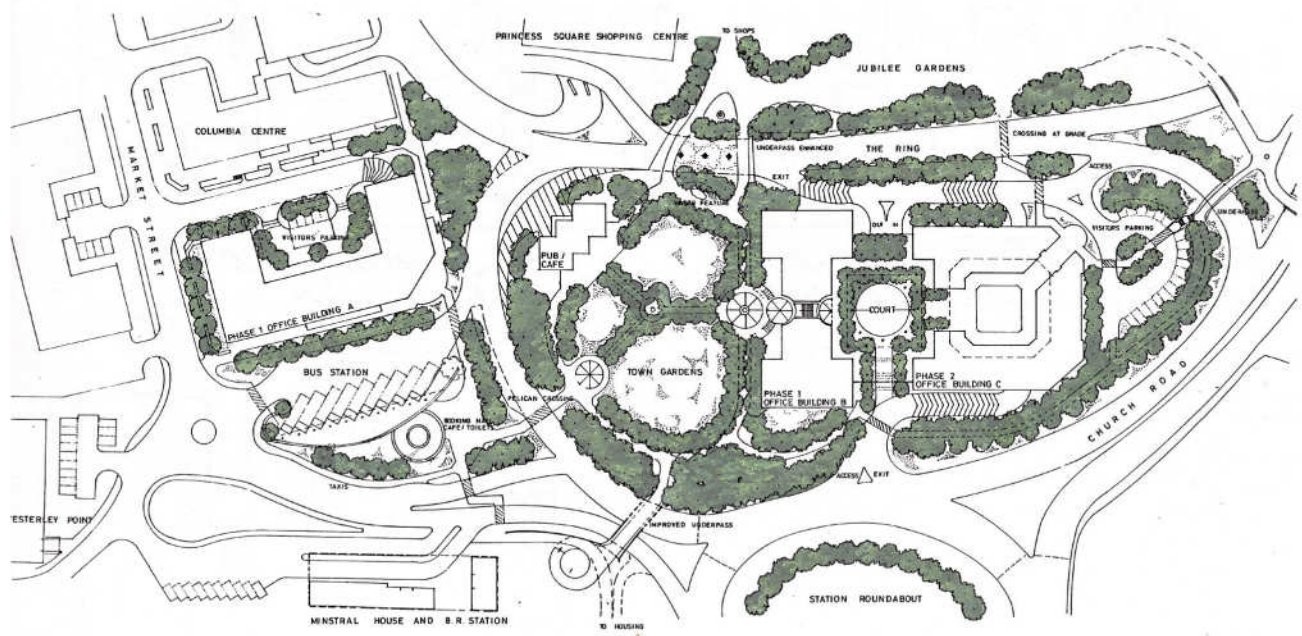
The design draws upon local building morphology into a language that meets with modern requirements, yet responds positively to the setting, whilst monitoring the local character.

The proposed scheme comprises two storey structures located on the Eastern and northern boundaries forming new street frontages.

Infilling on the high street is in the form of "villas" which take their design cue from Magnolia House and the adjoining properties.



Bracknell - South City Sites

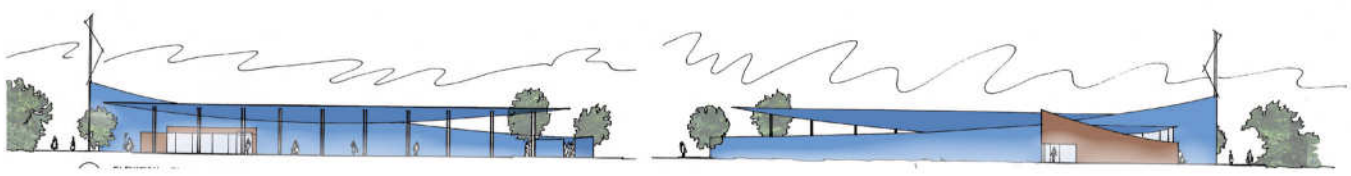


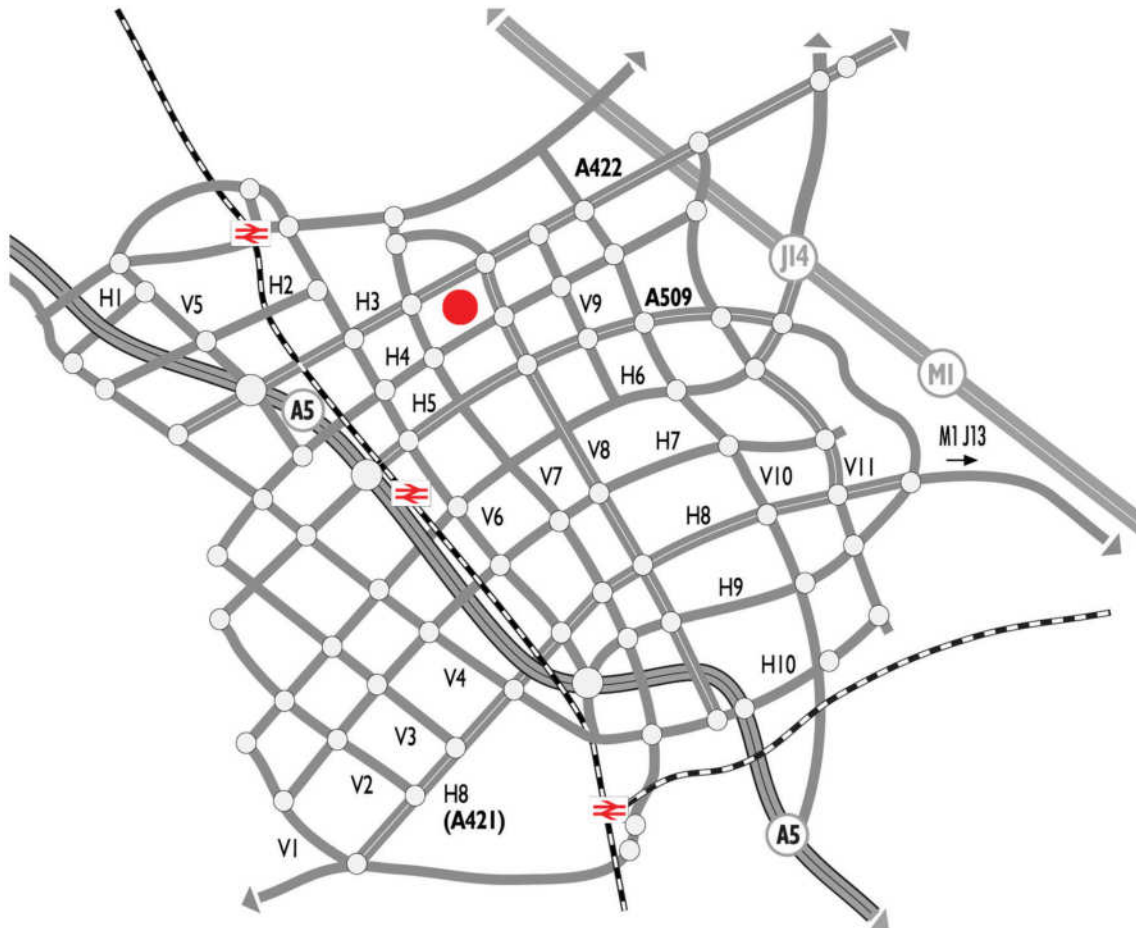
1 SITE PLAN



Client: English Partnerships

Submission of a detailed planning application based upon outline approval encompassing the design of specific blocks and a bus station

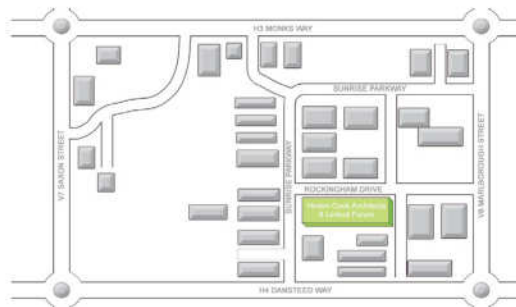




HINTON COOK
Architects

t: 01908 235544
f: 01908 200044
e: info@hintoncook.co.uk

o: 8 Linford Forum
Linford Wood East
Milton Keynes
MK14 6LY
w: www.hintoncook.co.uk



How to find us...

Linford Forum is located at Linford Wood, Milton Keynes' largest Business Park.

We are situated 1.25 miles from the city centre and 2 miles by dual carriageway from M1 junction 14.

RIBA 
Chartered Architects