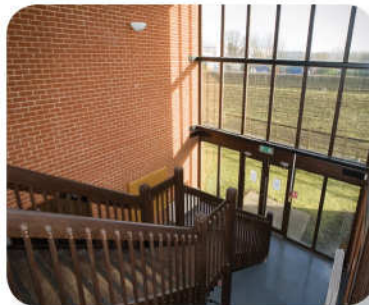




# Leisure + Commercial.....

Page

Marina - Mentmore Wharf.....	02
Forum Canopy - Milton Keynes.....	03
Liscombe Park.....	04
Visitor's Centre - Bradwell Abbey.....	05
Vehicle Servicing workshop - Towcester.....	06
Biomass Power Plant.....	07
Offices - Shelton House + Cricket Pavilion.....	08



Hinton Cook Architects 2009

# Marina - Mentmore Wharf



**Client:** Marina Developer

The building is set deep within the development site, in the north eastern corner by the Grand Union Canal.

The proposed building features a structural frame clad in timber, with a split level pitched roof to allow natural day lighting to enter deep into the building. Large expanses of glazing are used to allow natural light to enter the building and to also promote solar gain, whilst providing views out across the canal and marina.

The lower ground floor is set at the level of the marina, and houses the various uses required to operate the marina: Chandlery, shower block, marina maintenance and a marina storage area. Positioning the building at this level allows the marina users direct access to the chandlery and creates a more integrated development.

The upper ground floor accommodates the restaurant, bike store and main entrance to the building, and is accordingly level with the car parking.

The first floor houses a single two bedroom flat, and two offices including the Marina Office which has been located on southern aspect to allow the office to overlook the marina.

# Linford Forum Canopy - Milton Keynes

Client: The Parks Trust



## Design

The brief was to provide a replacement canopy to the entrance of the forum, an office building in Linford Wood.

The structure is designed to enhance the entrance and shelter users from the elements whilst maximising light and allowing it to flow through and announce the entry point.

A light steel structure with four corner posts is surmounted with structural glass held together with specially designed connectors.

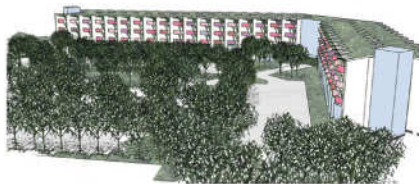
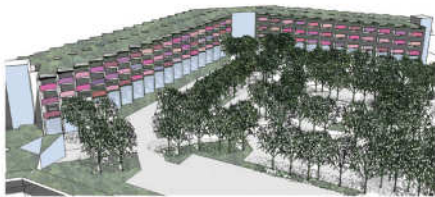
The overall appearance is one of a light, floating glass canopy as it sits slightly offset from its steel support sections.

# Liscombe Park - Masterplan



**Client:** Provide Developments

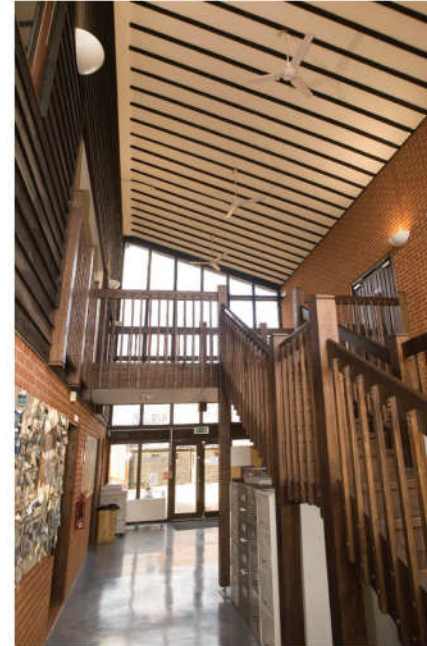
A masterplan for a large site which is designed to incorporate multiple leisure facilities including a golf course, hotel complex, health + fitness club and an equestrian centre.





**Client:** Commission for the new towns

The Bradwell Abbey Visitor Centre development incorporates the refurbishment of the historic buildings and barns, provides a new visitor centre and the redevelopment of the overall site for this scheduled monument, for the CNT.



# Vehicle Servicing Workshop - Towcester

Client: FJ Morris Contractors

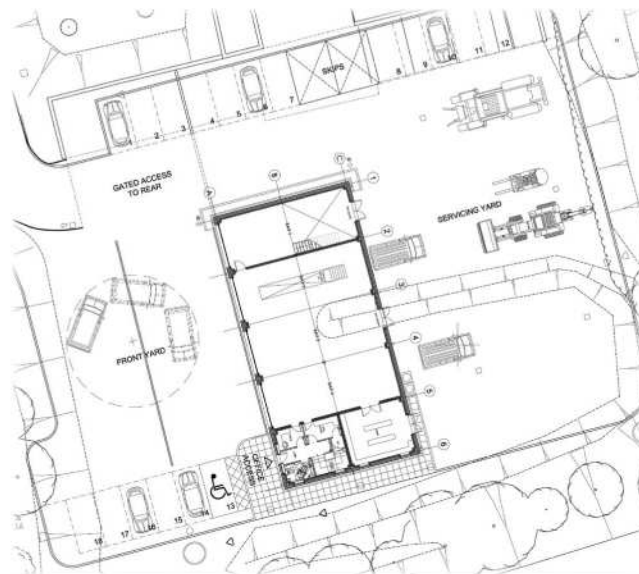


The client brief was to provide a vehicle servicing workshop with associated offices and bays. Close consultation with the local planning authority and client informed the design.

The workshop contains 4 service bays and two storey offices at one end. Structurally the building is a steel portal frame and clad with materials suited to its location.

Designed to mimic the original barns on site, the roof is amalgamated into a series of two pitched roofs with a central valley.

The upper half of the workshop is clad in timber which sits proud of a lower local limestone plinth. Planning approval was granted and build to begin shortly.



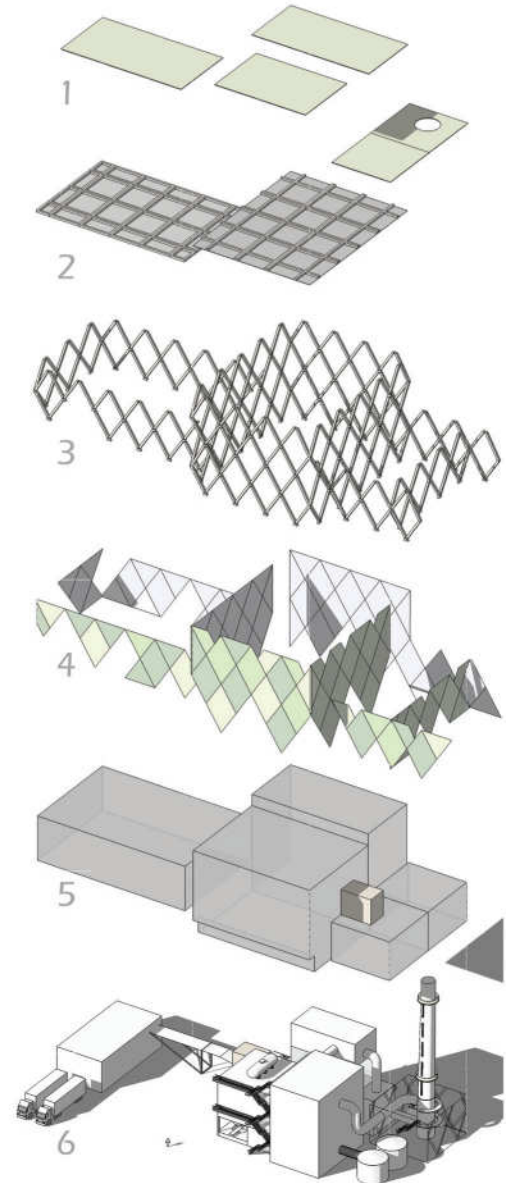
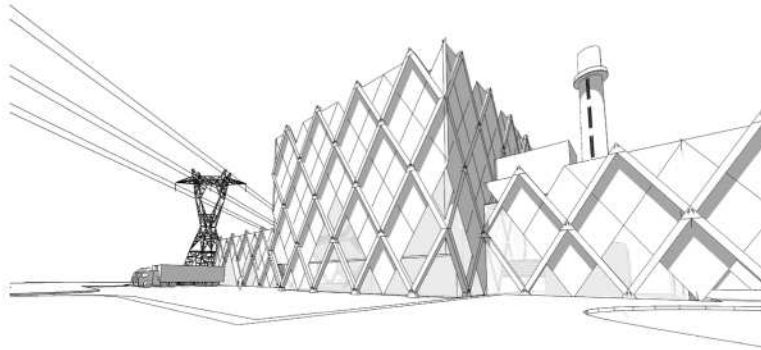
# Biomass Power Plant

**Client:** Recycling company

Hinton Cook Architects were invited to submit a design to house a biomass power plant with associated equipment stores.

Due to its location within the Green Belt, the scheme has been designed to minimise the visual impact upon its surroundings by employing a complex facade, which has been designed to break up the visual mass of the power plant, and takes its inspiration from the surrounding woodland.

The structure is based on a revealed timber exo-skeleton forming the 'primary' support for recycled cladding panels fixed behind the frame. The intricate structural lattice is repeated throughout the plant housing creating a rhythmic pattern visible from the adjacent motorways.





**Client:** Amberley Developments

Whilst in a conservation area, the proposal is to erect a new office building west of the existing car park and Shelton House with under-croft parking.

Architecturally, the building expresses a modern fusion of materials, comprising glass, render, timber and buff brick.

Render constitutes the upper half of the building as the single storey hall adjacent, with a brick plinth on the ground floor exterior walls.

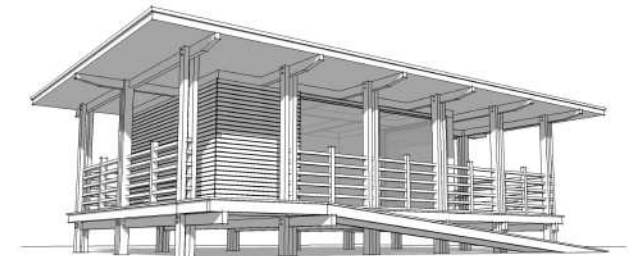
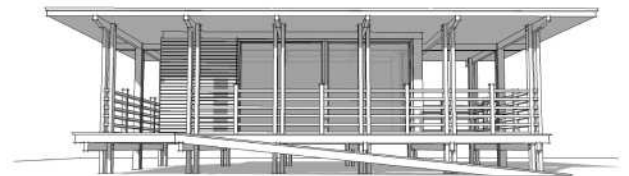
Timber panels allowed to weather naturally sit underneath office window openings.

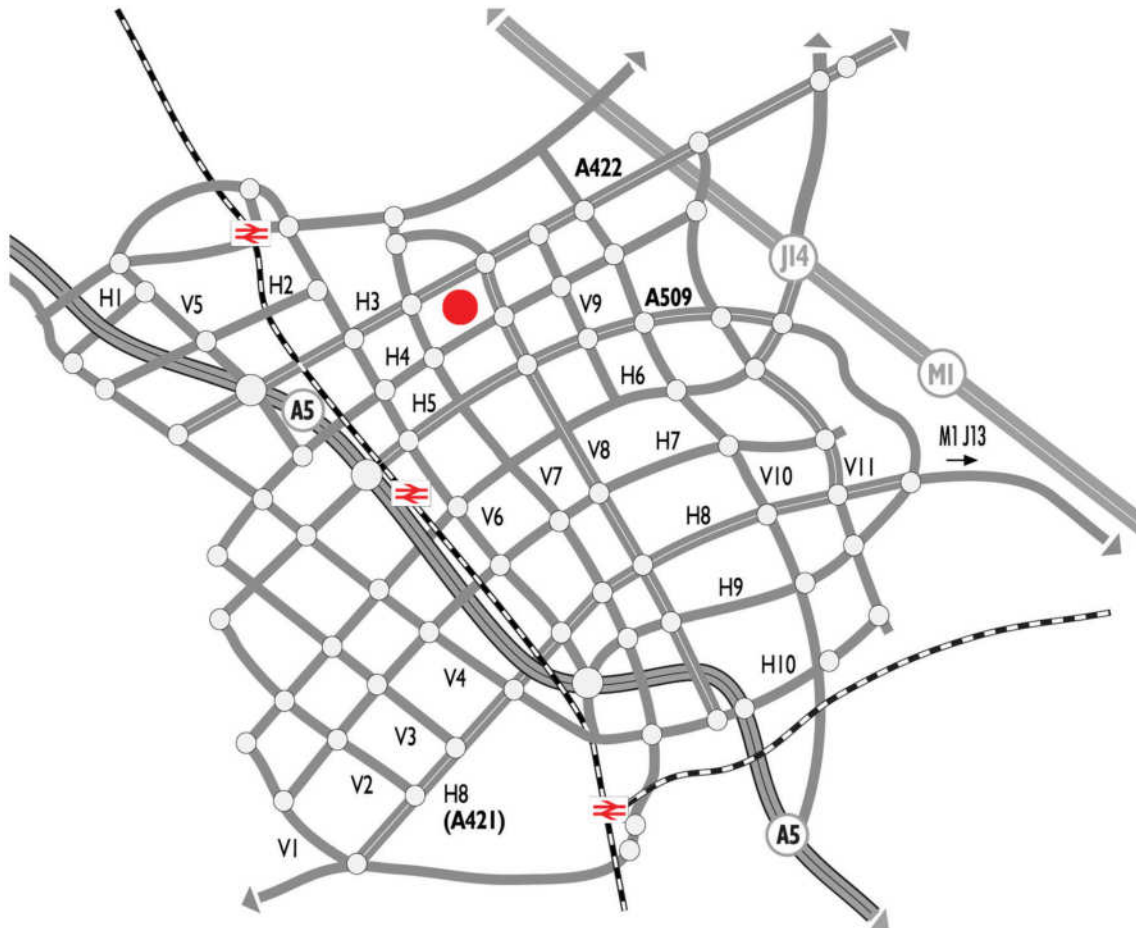


A contemporary approach to a cricket pavilion. The form was designed to emphasise horizontality and to be kept as low as possible.

Structural timber members are expressed externally to showcase their intricate connection details whilst creating a sense of a light-weight, dry and efficient construction.

The raised pavilion eliminates the need for a ground slab as it is supported by vertical timber posts that also brace the suspended floor.

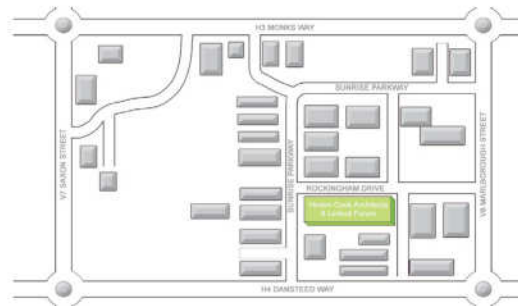




**HINTON** COOK  
Architects

t: 01908 235544  
f: 01908 200044  
e: info@hintoncook.co.uk

o: 8 Linford Forum  
Linford Wood East  
Milton Keynes  
MK14 6LY  
w: www.hintoncook.co.uk



**How to find us...**

Linford Forum is located at Linford Wood, Milton Keynes' largest Business Park.

We are situated 1.25 miles from the city centre and 2 miles by dual carriageway from M1 junction 14.

RIBA   
Chartered Architects