



Education Projects.....	Page
Bedford Modern School.....	02
Art & Technology Block - Design Study.....	03
Macintyre School - Wingrave.....	04
Oak Bank Sports Hall - Leighton Buzzard.....	06
Pre-prep school hall.....	07
Swanbourne - Various Projects.....	08



Hinton Cook Architects 2009

Bedford Modern School

Client: Bedford Modern

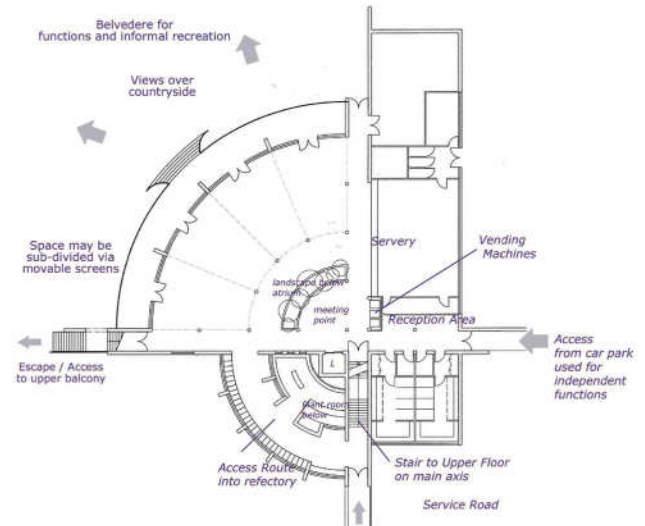
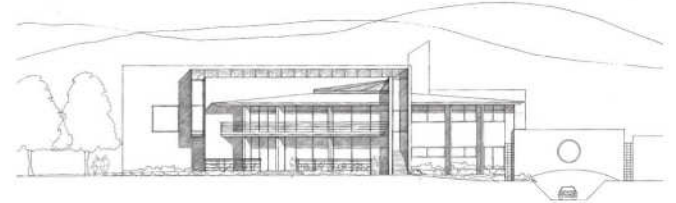


The competition brief was to provide a new sixth form centre on the grounds of the existing school.

The design concept was based on a radial plan intersected by cross-cutting axes forming circulation corridors.

This created segmented room formations providing panoramic north-facing views to communal zones such as the canteen and common room.

All corridors were designed to be naturally lit by providing high level glazing which would allow natural light penetration.



Prep School

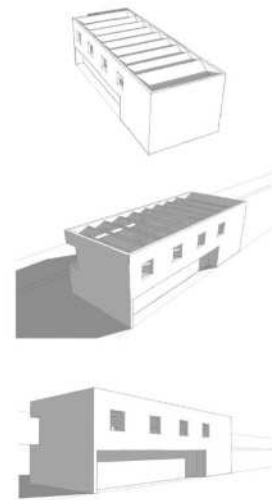
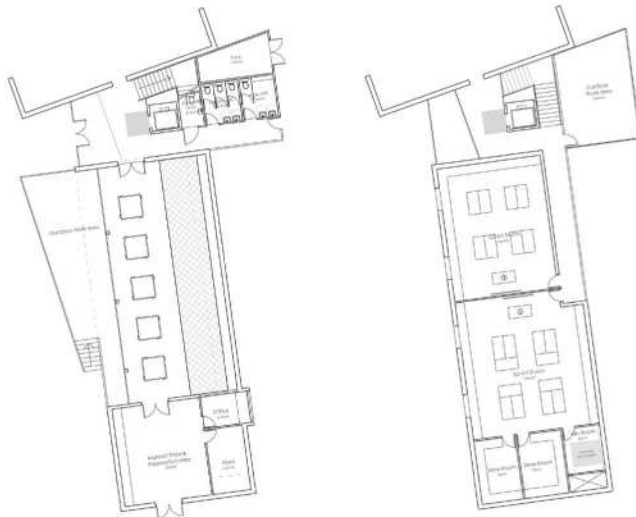
The School required a specialised Art & Design building as the current facility is inadequate for the schools needs.

The proposed building has separated the uses of art and technology over two floors to provide a spaces specific to the courses requirements.

The art studios have limited glazing to the facade as a collection of saw-tooth roof lights flood the spaces with natural north light.

An open plan ground floor houses the technology department and is illuminated by natural light from the site.

The ground floor also features an outdoor work area, which when combined with the sliding doors opens the technology department up in the summer, increasing the work area and allowing the students to work outside.





Client: Macintyre School

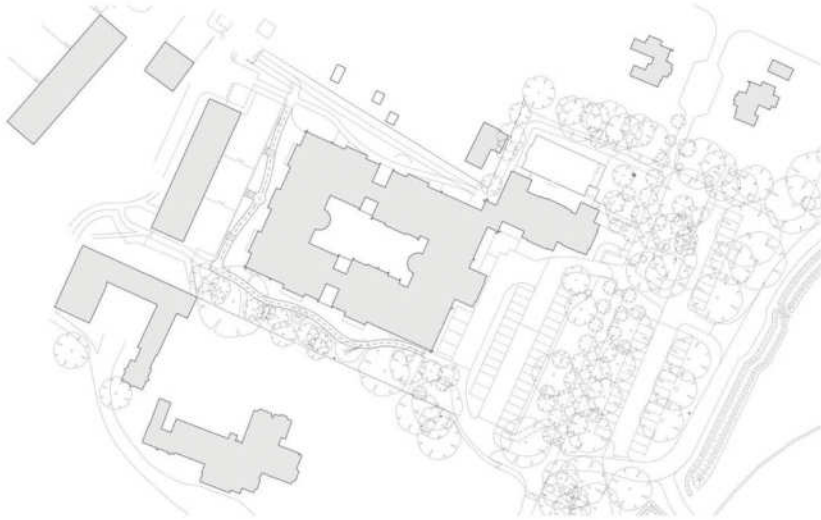
The school represents a ground up design for a school for children with special needs. Its location within a conservation area and the grounds of a listed building dictated the use of traditional materials.

The challenge was to synthesize modern environmental standards with traditional construction.

The new Macintyre school required a very specific design response to the childrens' needs. The design worked closely with staff and students to work through strategies to inform the design of the building.

The school was nominated and gained an award for good design by Aylesbury Vale district council 2007.





Hinton Cook Architects were also commissioned to produce a stained glass window for the main school hall. Incorporating Makaton principles to create a message saying "Welcome To Macintyre School".

Hinton Cook conducted a workshop with the students and three of the pieces of artwork produced were incorporated into the three panes of the glazed window.



Oak Bank School - Sports Hall - Leighton Buzzard

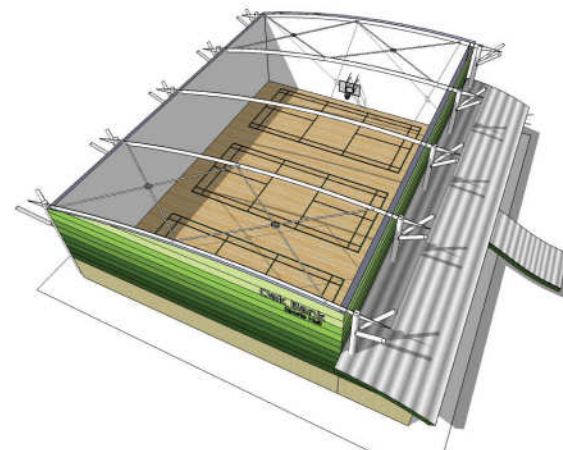
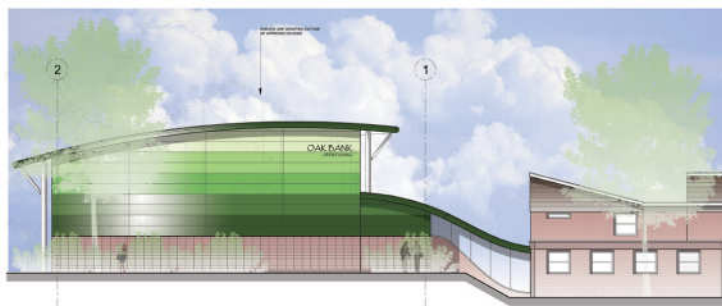
Client: Oak Bank School

Currently a school for special needs children, the school has seen a rapid increase in admissions hence requiring more space for sporting activities.

Hinton Cook Architects were appointed to design a new sports hall west of the existing school. Foremost, siting of the structure was crucial serving as a link between existing tennis courts and a football pitch.

An intricate steel structure braces the building externally whilst supporting the curved roof via an exoskeleton. This ensures the structure is revealed on the outside thus maximising internal play area which will contain three badminton courts and a basketball court.

Composite metal panels with high insulative and sound performance compliment the external appearance. These are installed above a brick plinth and graded with varying colour bands getting lighter towards the eaves.

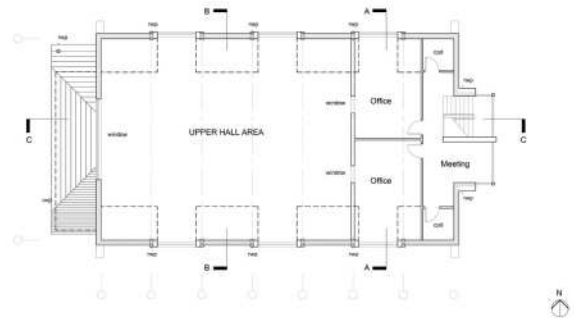
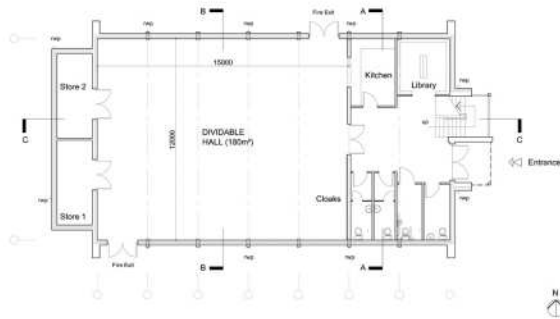


New School Hall

Client: Pre-prep School

Hinton Cook Architects were asked to prepare a design for a new assembly hall for the pre-preparatory part of the school, which could be used to hold class receptions, physical education classes and be opened up for after school events.

Due to the proposed location of the development, traditional materials and proportions have been used to enable the building to fit in with its surroundings.

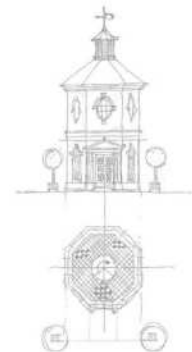


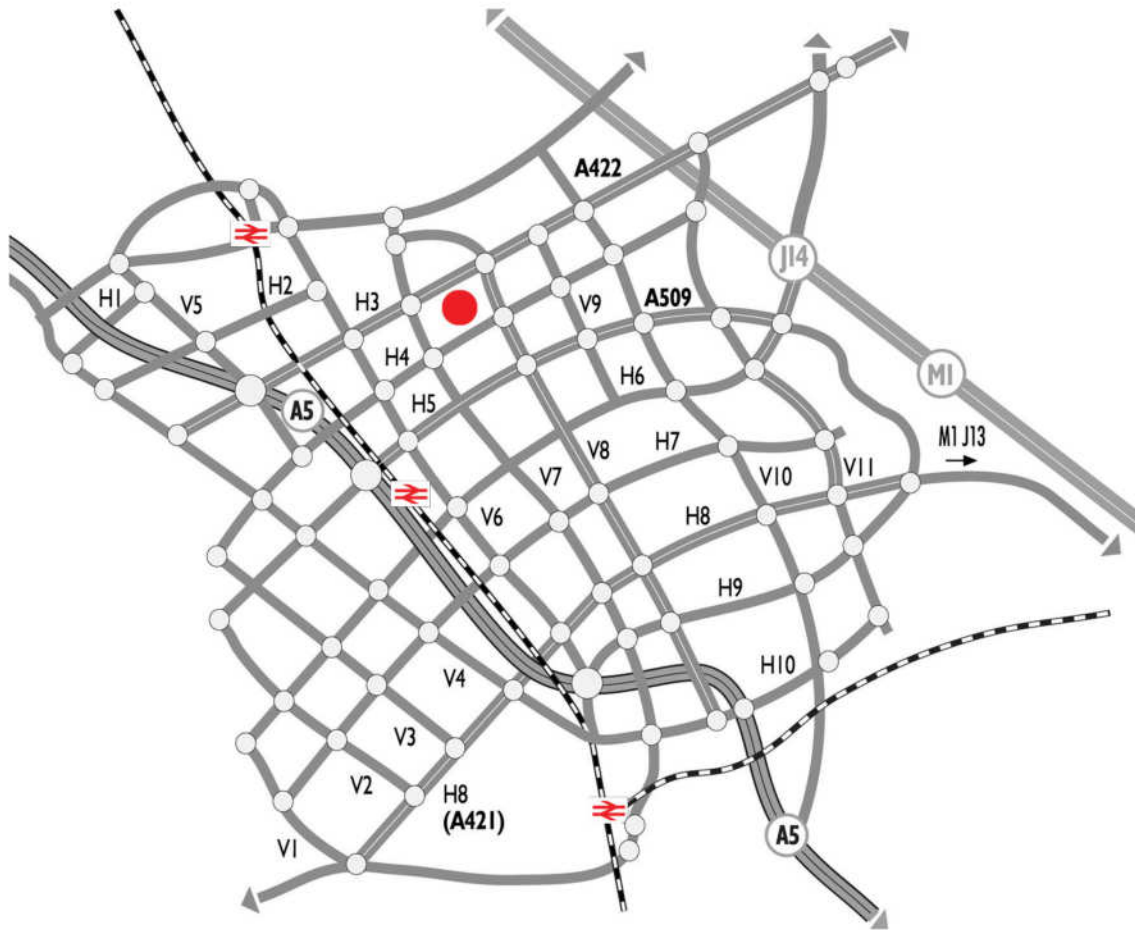
Swanbourne House School - Various Projects



Having developed a relationship with Swanbourne House School over a twenty year period and working closely with the governors and staff we have delivered a range of buildings from sports facilities, and swimming pool to a school hall and gym.

Projects completed include a science block, New school hall, Headteacher's house, New - Pre-School block, Swimming Pool, Teacher's block, an all weather sports court and the renovation and re-modelling of the interior of the original listed building.

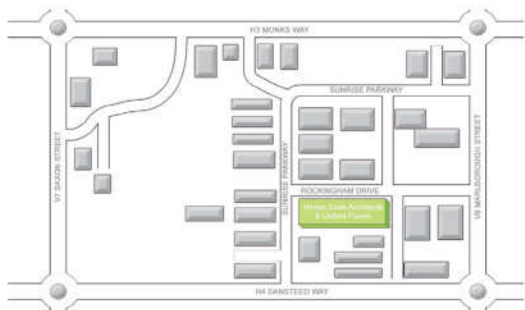




HINTON COOK
Architects

t: 01908 235544
f: 01908 200044
e: info@hintoncook.co.uk

α: 8 Linford Forum
Linford Wood East
Milton Keynes
MK14 6LY
w: www.hintoncook.co.uk



How to find us...

Linford Forum is located at Linford Wood, Milton Keynes' largest Business Park.

We are situated 1.25 miles from the city centre and 2 miles by dual carriageway from M1 junction 14.

RIBA 
Chartered Architects